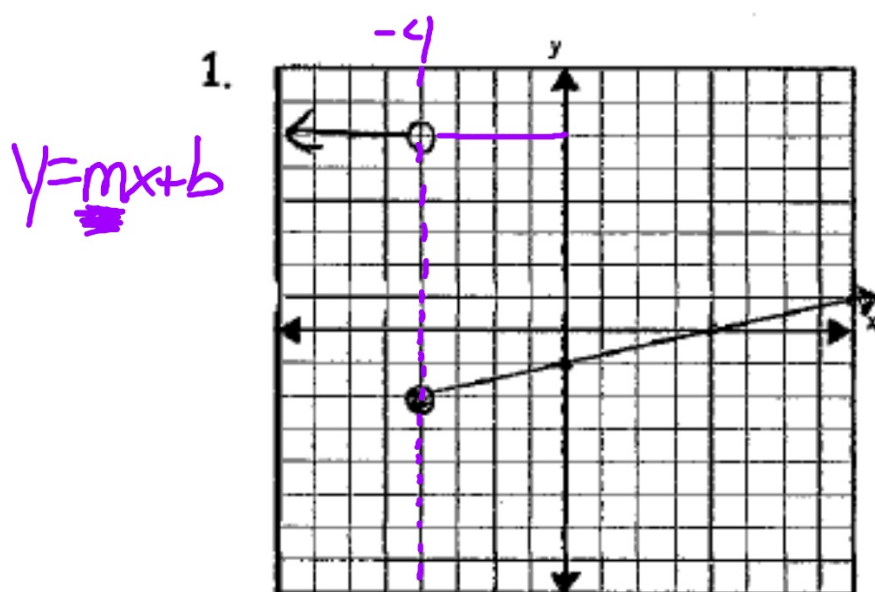


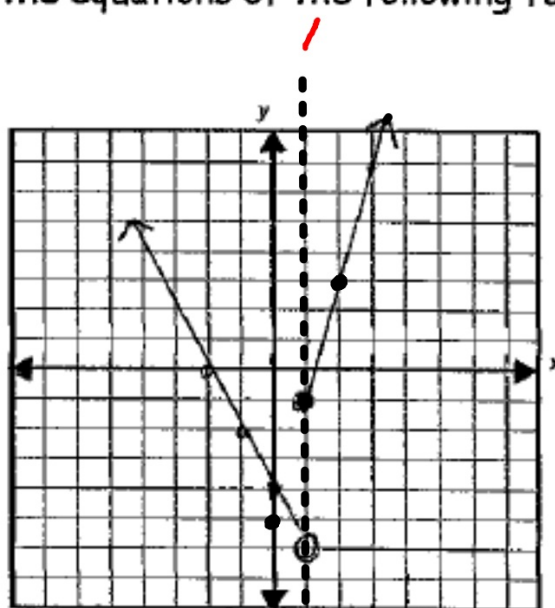
Write the equations of the following functions.



$$f(x) = \begin{cases} \frac{1}{4}x - 1 & \text{if } x < -4 \\ 6 & \text{if } x \geq -4 \end{cases}$$

Write the equations of the following functions.

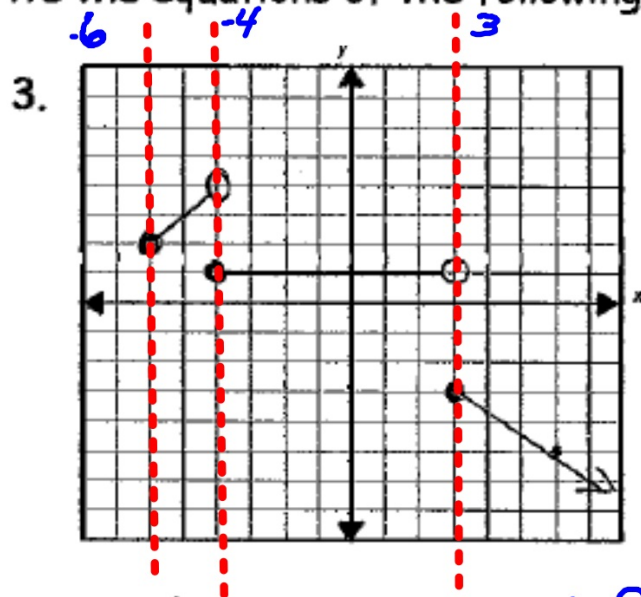
2.



$$f(x) = \begin{cases} -2x - 4 & \text{if } x < 1 \\ 4x - 5 & \text{if } x \geq 1 \end{cases}$$

$$\frac{-4}{-1}$$

Write the equations of the following functions.



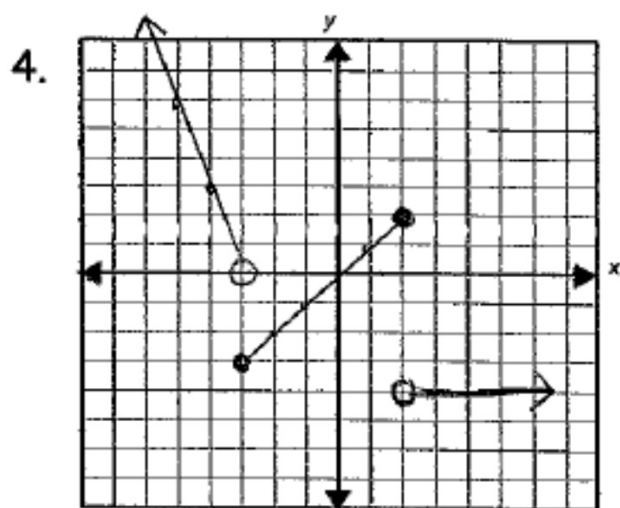
$$f(x) = \left\{ \begin{array}{l} \text{if } -6 \leq x < -4 \\ \text{if } -4 \leq x < 3 \\ \text{if } x \geq 3 \end{array} \right.$$

if  
if  
if

$$-6 \leq x < -4$$

$$-4 \leq x < 3$$

Write the equations of the following functions.



$$f(x) = \left\{ \right.$$

Use the  $f(x) = \begin{cases} 2x-1 & \text{if } -5 \leq x < 3 \\ 4 & \text{if } 3 \leq x < 5 \\ -x+5 & \text{if } x \geq 5 \end{cases}$

5.  $f(3)$

6.  $f(-5)$

7.  $f(-8)$

8.  $f(9)$